

SETTING UP JONAS WITH TERMINAL SERVICES / CITRIX

The most important part of this process is that we **MUST** work in conjunction with the network/hardware personnel to ensure that the clients network setup is maintainable.

With the release of *Window 2003*, most of our clients will use Terminal Services, and only in a few rare instances will they actually need to upgrade to the full Citrix package.

The Issue

Terminal Services allow many people to “share” the processing power of a central computer. The advantage for our clients of this centralization approach is that we can deploy Jonas over low bandwidth situations and have better data integrations, rather than using “sneaker-net” or posting chits manually.

When a user signs onto Terminal Services, they are given their own individual workspace, however, the critical Jonas data file “Jonas.INI” is installed by the workstation tool kit into a the default “Windows” directory – usually “C:\Windows”

This creates a problem, as the workstation ID is contained in this file and if it is the “Windows” directory then all users would have the identical workstation ID.

In addition, there are also some “Shared” programs files and each Terminal Server session must have it's own unique copy.

The Solution

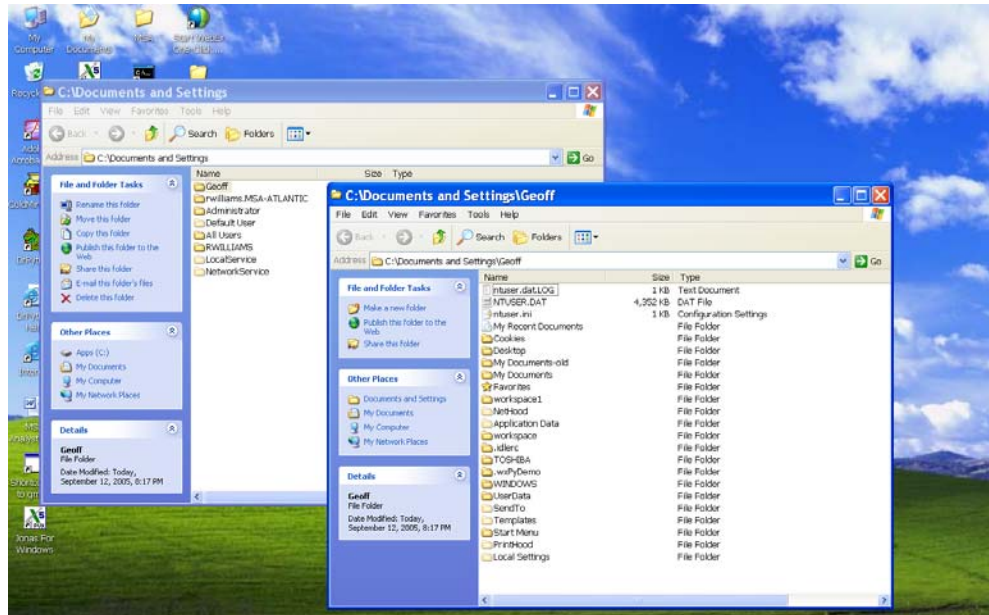
Using the normal operating characteristics of Windows and Windows Terminal Services, we can design a structure that creates separate work spaces for each individual user.

Follow these instructions for a single “Test User”. Then replicate for all existing users. For subsequent users, you can use the “DEFAULT USER” to automatically setup and copy the directory and file structures for all new users once they have been created.

1) Setting Up the User Profile

Each Terminal Server has a default directory structure that stores the unique information for each user. The default location is:

C:\Documents and Setting\USERNAME - where USERNAME is the network log-on name provided



2) For each user, add the special Jonas folders

Add the folder, Jonas (make this GJCWIN to be consistent with the below steps)

-- add the folder "DATA" inside this one

You should now have a directory structure as follows:

C:\Documents and Setting\USERNAME\GJCWIN

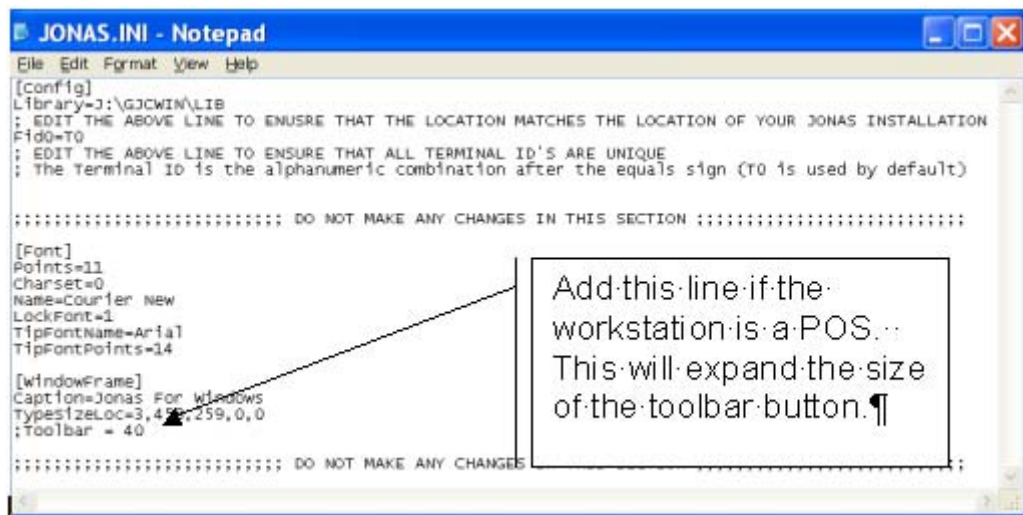
C:\Documents and Setting\USERNAME\GJCWIN\DATA

3) Copy the Jonas.INI file from GJCWIN

Each installation of Jonas is delivered with a folder called “**SPECIAL**”. This contains a standard distribution Jonas.INI file.

- Copy this file to the user profiles “**GJCWIN**” folder.
- Open the new Jonas.INI file and edit the FID0 = T0 line to assign a unique terminal ID
- If this is a POS stations, scroll down to the “[WindowFrame]” section and add the line:

TOOLBAR = 40 - This will enlarge the size of the tool bar buttons.



4) Setting up the Login Script

All clients should have their server configured to automatically re-map the “J:” drive at each User Login. This is typically done with a Login Script or some form of “Group Policies”.

Once the methodology has been established, we need to add an additional drive letter to link to the User Profile. Using the Login Script method, we would simply add the command:

NET USE U: C:\Documents and Settings\%USERNAME%

This tells the system to map the “U:” drive back to the Documents and Settings folder and substitute the logged in USERNAME between the % signs.

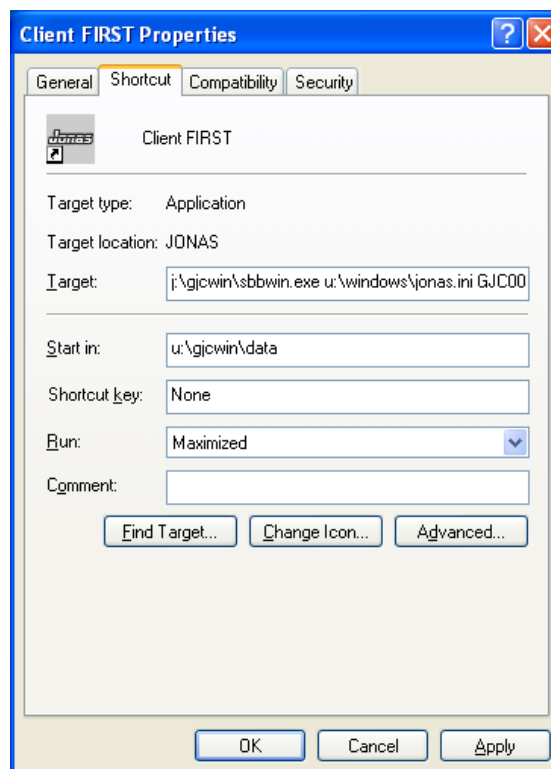
5) Building the Desk Top ICON

Each Users Profile includes a unique Desktop. This is stored in the folder:

C:\Documents and Settings\USERNAME\Desktop

Navigate to this folder and manually build the Jonas "Shortcut"

1. Right click in this folder and select "NEW"
2. Browse until you find Jonas on Providex executable on the server
 - a. This should be J:\GJCWIN\SBBWIN.EXE
 - b. Give the new short cut a name – Jonas for Windows
 - c. Press "Save"
 - d. Go back to the new icon and right-click and bring up the properties
 - e. Change the "Program File Name" to read:
 - i. J:\GJCWIN\SBBWIN.EXE U:\JONAS\JONAS.INI GJC00
 - ii. This line should read j:\gjcwin\sbbwin.exe u:\windows\jonas.ini gjc00 to be consistent with your document
 - f. Change the Start In to read:
 - i. U:\JONAS\DATA
 - ii. This line should read u:\gjcwin\data to be consistent with your document
 - g. Also, you need to copy the file start_up into the u:\gjcwin\data folder to ensure the Jonas Application launches correctly



6) 'YER DONE !!

Login into the Terminal Server with Username and Password you had been working with. You should now have a working ICON on the specific Users desk top.

Cleaning Up and Simplifying

Setting up the Default User

If this is a new installation, then follow the basic steps, but add the folders and information to the "Default" User using simple "copy and paste". That way when a new User signs onto Terminal Services, the folder and file structure will automatically be copied to their unique folder. All that will remain is to edit the Terminal ID in the Jonas INI file.

Adding the Jonas Icon to All Users

In addition to the "DEFAULT" user, there is an special additional setting for "All Users". If the Jonas Desktop ICON is added to this "Desktop" setting or "Programs" setting, it will appear on every Users desktop and program listing.

Published Application

Terminal Services has the option of forcing an application to run at each login. On exiting from the application, closing the terminal services session. This is called a "**published**" application.

If using Terminal Services to support POS, it is recommended that all POS access thru published application.

Printing – Remote vs. Local and POS Workstations

Terminal Services is a centralized computing environment. This has many benefits, but sometime printing to the a locally attached printer can be tricky.

For regular workstations, this can be solved simply by selecting the remote windows printer from the printer selection drop down box. POS workstation have their printer style "embedded" in the applications, so a special printer setup is required:

- a) Add the printer device driver at the POS workstation – preferably "Generic Text"
- b) Make sure that this "Windows" printer is tagged as the "DEFAULT" printer in Windows
- c) Within Jonas create the Printer Style for the chit printer
 - 1) In the Device/File name box enter the word "DEFAULT"
- d) In Terminal Services default user settings, make sure that the icons "Connect client printers at logon" and "Default to main client printer" are both checked.

Once this printer style is added to POS workstations definitions in Jonas, all POS terminals, connecting thru Terminal Services should be able to print to the local printer.

NOTE: If the above printer setup is specifically designed for Terminal Services. IF this client has upgraded to Citrix, a different strategy may be required.